



# User-Guide

# Novo-Gloss Multi Gauge

Reference manual for Novo-Gloss Multi Gauge Lite, Advanced & Pro Software packages



## Introduction

Novo-Gloss Multi Gauge Software is designed to connect to the gloss measurement devices of Rhopoint Instruments, UK.

It offers an easy means to measure, import and compare data and export the measurements into several other file formats, e.g. HTML5, Excel® or CSV file format.

Every effort has been made to ensure the accurate operation of this software. Please note that this manual covers all available functions for “Pro” version of the software, so not all options described herein are available in Lite or Advanced versions.

However, should you have any questions or comments, you can use the support section of the software or directly contact Rhopoint Instruments.

### Formal designations of application software used in this manual

(Designation used in this manual)	(Formal designation)
Windows, Windows XP, Vista, 7	Microsoft® Windows® XP/Vista/7/8 Professional Operating System
Office, Office 2003/2007/2010	Microsoft® Office® 2003/2007/2010
Excel, Excel 2003/2007/2010	Microsoft® Excel® 2003/2007/2010

### Trademarks

“Microsoft”, “Excel”, “Excel 2003”, “Excel 2007”, “Excel 2010”, “Windows”, “Windows XP”, “Windows 7” and “Windows 8” are either registered trademarks or trademarks of Microsoft Corporation in the United States and/or other countries.

Other company names and product names mentioned in this manual are the registered trademarks or trademarks of their respective companies.

### Notes on this manual

No part of this manual may be reprinted or reproduced in any form or by any means without the permission of Rhopoint Instruments or CyanCor GmbH.

The contents of this manual are subject to change without prior notice.

Every effort has been made to ensure the accuracy of the contents of this manual. However, should you have any questions or comments, or find an error or missing section, please contact [support@novogloss.com](mailto:support@novogloss.com).

Rhopoint Instruments and CyanCor GmbH accept no responsibility for consequences resulting from failure to follow the instructions outlined in this manual, the condition above notwithstanding.

Rhopoint Instruments and CyanCor GmbH point out that the file types offered are to be seen as industry standard and that the user needs to be experienced in dealing with Excel or other 3<sup>rd</sup> party programs in order to make further use of these.

# Novo-Gloss Multi Gauge user-guide Content

- Introduction..... 1
- Chapter I – licensing your Novo-Gloss Multi Gauge software..... 3**
  - Start page..... 3
  - Exit Application dialogue ..... 3
  - Manage licence page ..... 4
  - Manage licence online page..... 4
  - New customer ..... 5
  - Existing customer..... 5
  - Manage licence offline page..... 6
  - License Activation dialogue..... 8
- Chapter II - Pairing your instrument ..... 10**
  - Step 1: establish Bluetooth® connection between PC and device ..... 10
  - Step 2: pairing your device with Novo-Gloss Multi Gauge..... 11
- Chapter III – Working with Novo-Gloss Multi Gauge ..... 12**
  - Home screen..... 12
  - Measurement pages..... 13
  - Simple View ..... 13
  - Extended View ..... 14
  - Data view section ..... 15
  - Graph view section..... 16
  - Import data page ..... 17
  - Export data page ..... 18

## Chapter I – licensing your Novo-Gloss Multi Gauge software

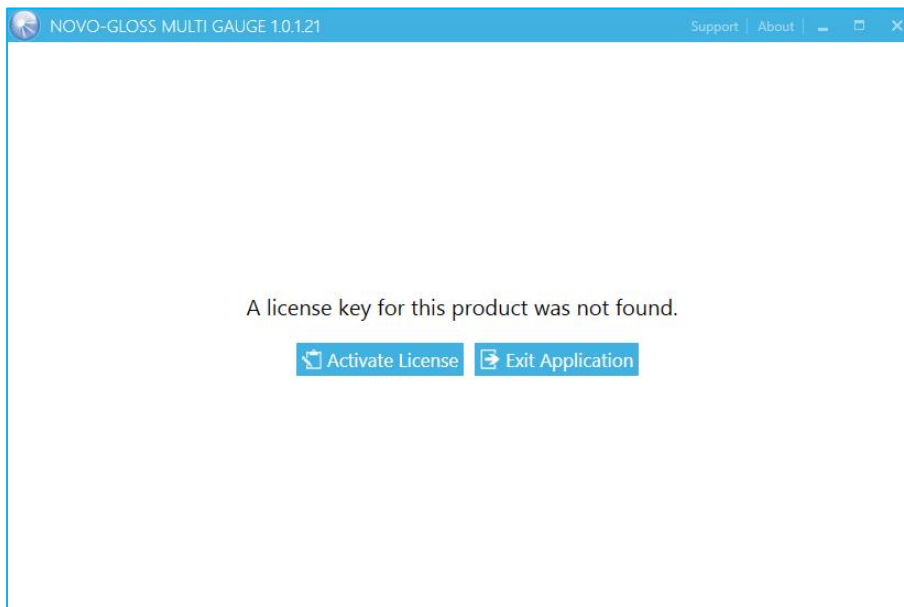
### Start page

Upon starting the NOVO-GLOSS MULTI GAUGE software for the first time you are shown the first-start screen prompting you for license activation.

The software needs to be activated in order to be worked with; to receive a valid licence file please enter the Licence Management dialogue.

Two choices apply:

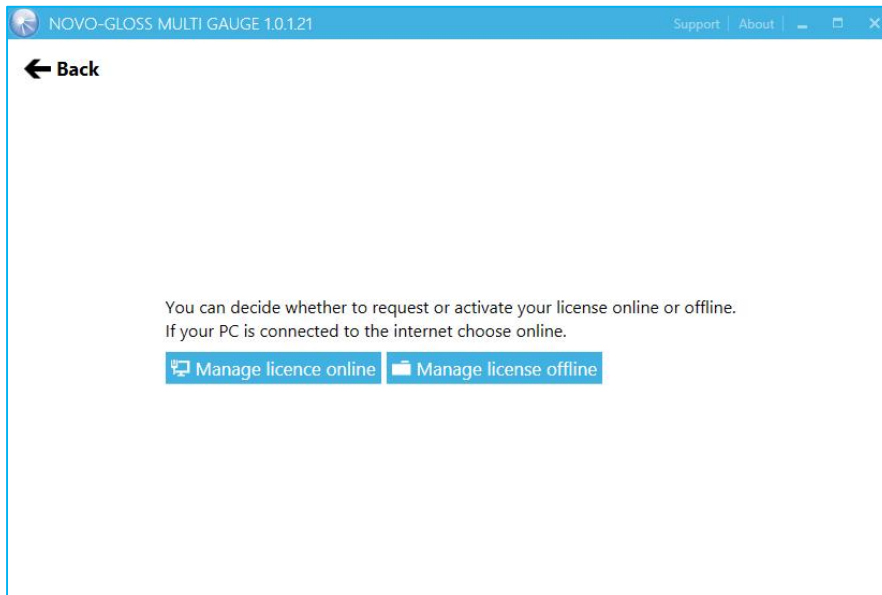
- Activate Licence (*opens the manage licence page*)
- Exit Application (*terminate NOVO-GLOSS MULTI GAUGE*)



### Exit Application dialogue

When you press “Exit Application” in the first start screen, the software will terminate and a verification dialogue appears.

## Manage licence page



Two choices apply:

- Manage licence online (*online activation via internet connection*)
- Manage licence offline (*offline activation via licence file or Email*)

## Manage licence online page



Two choices apply:

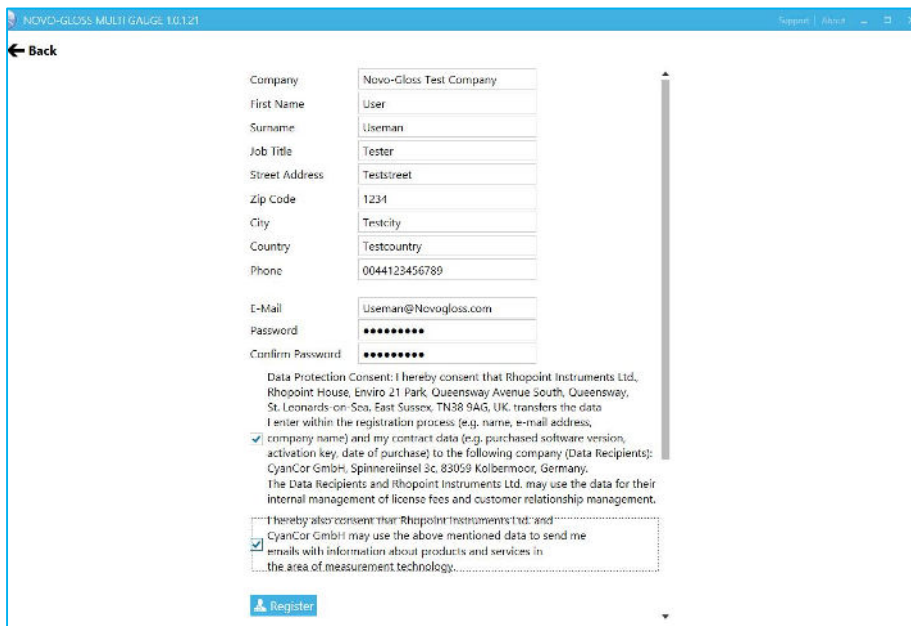
- New customer (*register a new software account*)
- Existing customer (*use an existing software account to activate your licence*)

## New customer

In order to use the software, you need to register your account.

Enter your Company and user details in the appropriate fields of the dialogue.

Be sure you use a valid email as well as a decent password (advice: you should follow the latest guidelines for creating secure passwords).



The screenshot shows a registration form for 'NOVO-GLOSS MULTI GAUGE 1.0.1.21'. The form includes fields for Company, First Name, Surname, Job Title, Street Address, Zip Code, City, Country, Phone, E-Mail, Password, and Confirm Password. Below the form is a data protection consent section with two checkboxes and a 'Register' button.

Company	Novo-Gloss Test Company
First Name	User
Surname	Userman
Job Title	Tester
Street Address	Teststreet
Zip Code	1234
City	Testcity
Country	Testcountry
Phone	0044123456789
E-Mail	Userman@Novogloss.com
Password	*****
Confirm Password	*****

Data Protection Consent: I hereby consent that Rhopoint Instruments Ltd, Rhopoint House, Enviro 21 Park, Queensway Avenue South, Queensway, St. Leonards-on-Sea, East Sussex, TN38 9AG, UK, transfers the data I enter within the registration process (e.g. name, e-mail address, company name) and my contract data (e.g. purchased software version, activation key, date of purchase) to the following company (Data Recipients): CyanCor GmbH, Spinnereinsel 3c, 83059 Kolbermoor, Germany. The Data Recipients and Rhopoint Instruments Ltd, may use the data for their internal management of license fees and customer relationship management.

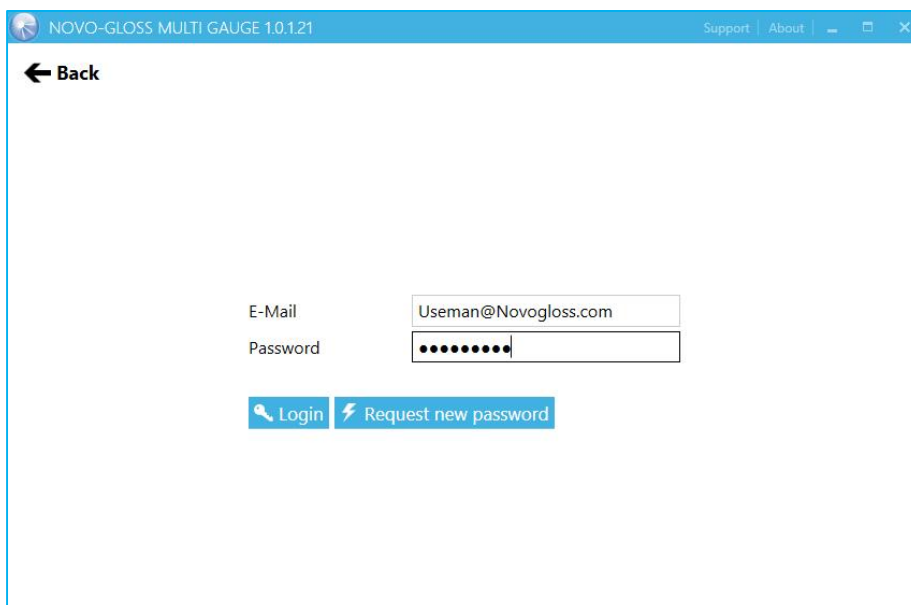
I hereby also consent that Rhopoint Instruments Ltd and CyanCor GmbH may use the above mentioned data to send me emails with information about products and services in the area of measurement technology.

[Register](#)

After your user information is entered, please read the data protection consent and related info, check the checkboxes if you agree and then please click on “Register”.

## Existing customer

If you already have an account, log in for updating or registering your license.

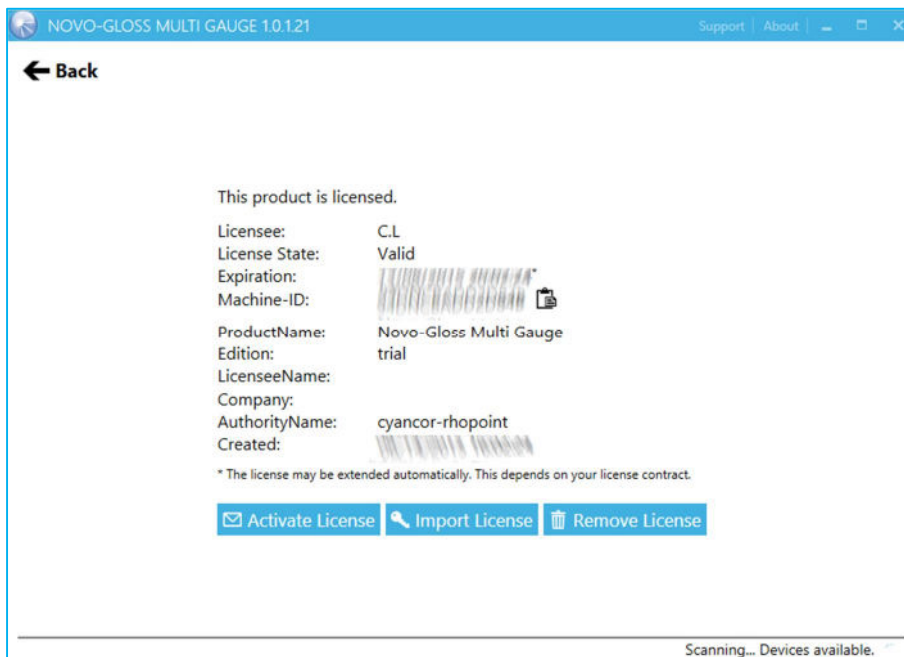


The screenshot shows a login form for 'NOVO-GLOSS MULTI GAUGE 1.0.1.21'. It includes fields for E-Mail and Password, and buttons for 'Login' and 'Request new password'.

E-Mail	Userman@Novogloss.com
Password	*****

[Login](#) [Request new password](#)

## Manage licence offline page



This button enables the offline activation of NOVO-GLOSS MULTI GAUGE; use this option if you have no access to the internet and want to activate your software via Email or a 2<sup>nd</sup> PC.

Three choices apply:

- Activate License
- Import Licence
- Remove Licence

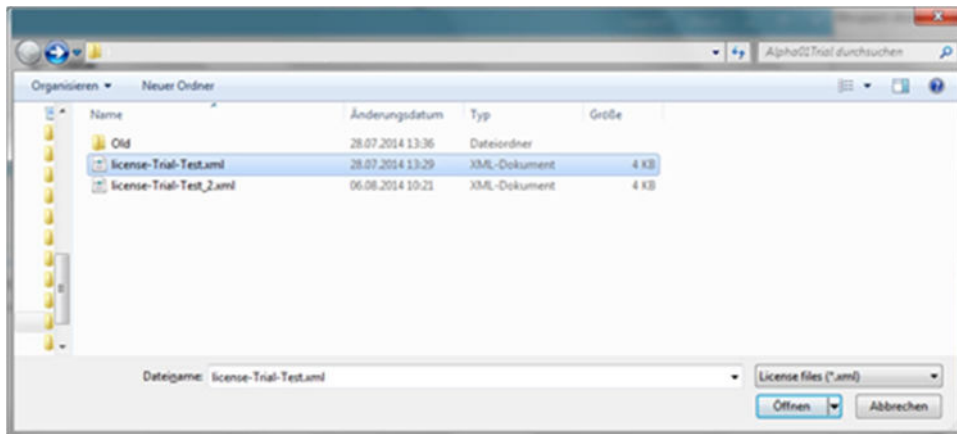
## Activate Licence

Brings you back to the previous screen.

## Import Licence

This button opens the Windows explorer.

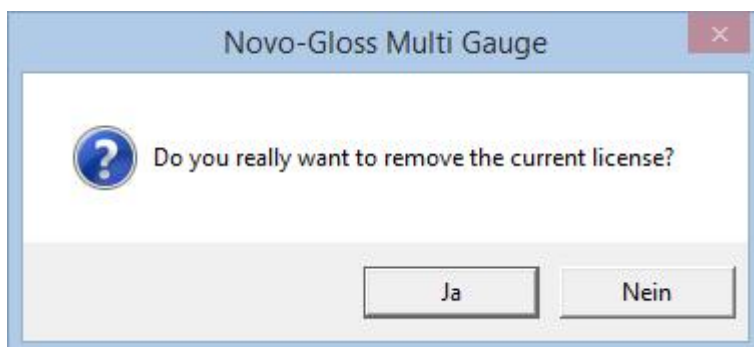
Choose the path and file where your license file is stored.



## Remove Licence

Press this button in case you want to remove your licence and activate it on another PC.

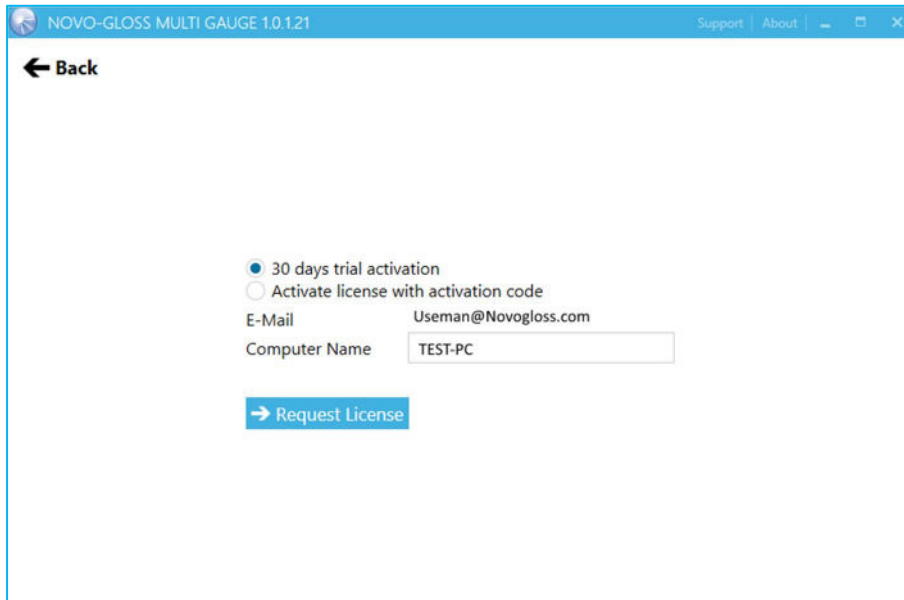
Select “Yes” in upcoming dialogue to remove your licence and make it available for activation once again, otherwise select “No”.





## License Activation dialogue

After you registered or entered your login credentials, you will be in the license activation dialogue.



NOVO-GLOSS MULTI GAUGE 1.0.121

Support About

← Back

30 days trial activation  
 Activate license with activation code

E-Mail Useman@Novogloss.com

Computer Name TEST-PC

→ Request License

Two choices apply:

- either activate a 30-days trial license
- or enter an activation code



NOVO-GLOSS MULTI GAUGE 1.0.121

Support About

← Back

30 days trial activation  
 Activate license with activation code

Activation code 12345-67890-12345-67890

E-Mail Useman@Novogloss.com

Computer Name TEST-PC

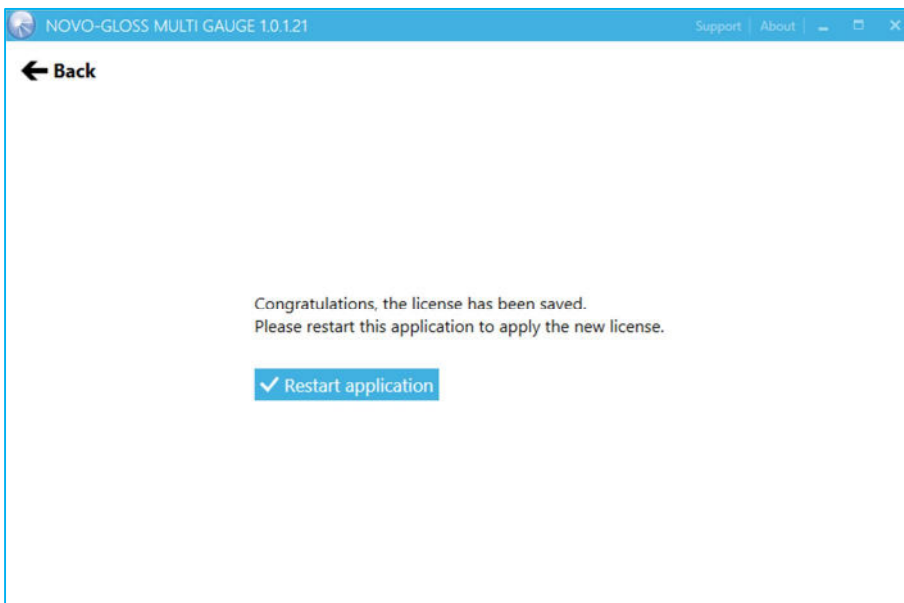
→ Request License

Once you made your choice, please click on “Request License”

The software will now connect to the server and issue a license file.



After a license file has been issued successfully, you will receive a confirmation and you need to restart the software.



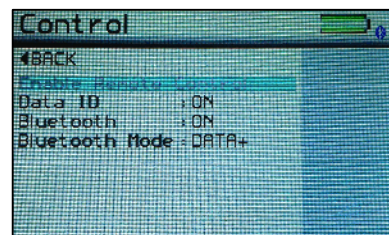
## Chapter II - Pairing your instrument

There are two possible ways for NOVO-GLOSS MULTI GAUGE to receive data from Rhopoint devices:

- Active transfer of data via Bluetooth®
- Transfer of stored measurements via USB

### Step 1: establish Bluetooth® connection between PC and device

1. Activate Bluetooth® pairing on the Rhopoint instrument device
  - a. Turn on the instrument
  - b. Enter the “Control” menu
    - Go to “Menu” (Button “Down”)
    - Go to “Setup” (Button “Right”)
    - Go to “Control Menu”
  - c. Set DATA ID to ON
  - d. Set SOF/EOF to ON
  - e. Set Bluetooth to ON
  - f. Set Bluetooth Mode either to  
DATA (values only) or DATA+ (values plus photometric curve (IQ))



2. Activate the Bluetooth® link on the PC  
(Please refer to the used adapter's installation/activation instructions)
3. Establish pairing following the Bluetooth® adapter's instructions

#### Example:

The following link shows describes connections using Microsoft™ resources:

<http://windows.microsoft.com/en-us/windows7/connect-to-bluetooth-and-other-wireless-or-network-devices>

4. If your device has been paired once, you can directly connect via Novo-Gloss Multi Gauge (refer to step 2) in the future

#### Note for Rhopoint Data Widget users:

For working with NOVO-GLOSS MULTI GAUGE, the Rhopoint Data Widget **MUST BE TURNED OFF!**

This is important as NOVO-GLOSS MULTI GAUGE will only connect a device if the Rhopoint Data Widget is deactivated (and vice versa).

## Step 2: pairing your device with Novo-Gloss Multi Gauge

Once connection has been established between PC and device, the software will take over and manage device connections for you.

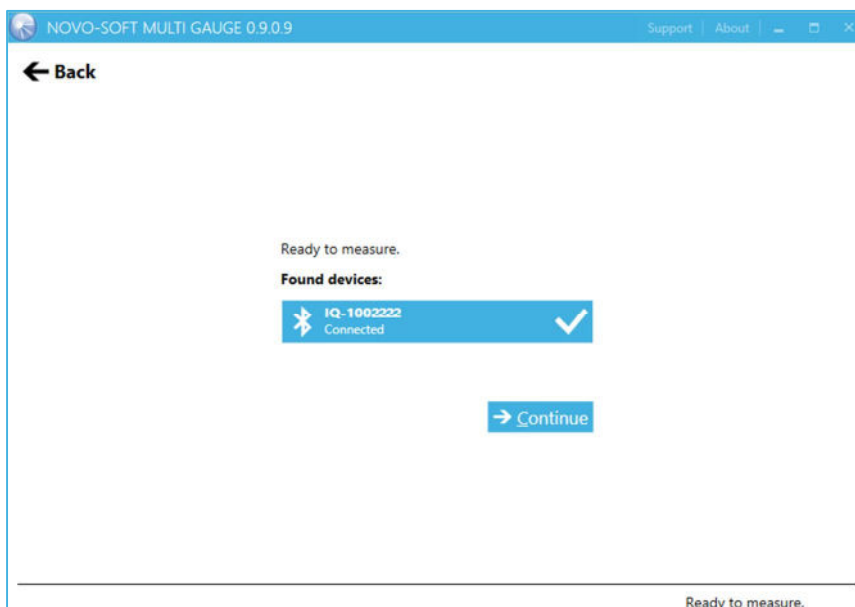
If step 1 activated devices are available, the software will show you all of them – you can use them all in parallel for measurements.

If your instrument has not been paired yet, it appears as “**Disconnected**”



In order to activate an instrument for measurement, click on the instruments name.

It will now **connect** and is now “ready to measure” (compare note in lower right page)



## Chapter III – Working with Novo-Gloss Multi Gauge

### Home screen

After your NOVO-GLOSS MULTI GAUGE license has been activated, the software will start in the home screen.

**General Hot Key:** ESC/Backspace - return to previous screen



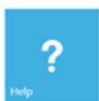
From the home screen there are three options you can choose from:



- Measurement (*measure and analyse data with your device*)



- Configuration (*configure parameters for devices and software*)



- Help (*opens the support section*)

Information in the lower right page of the home screen:

- License information: e.g. **License expires in 30 days** for trial versions
- Device status: e.g. **Scanning for devices...** if no instrument is paired yet

Information in the upper right page of the home screen:



- Opens the support section to raise questions or give feedback



- Opens the additional information about Novo-Gloss Multi Gauge



- Purchase an upgrade to an existing License (e.g. Lite to Advanced)

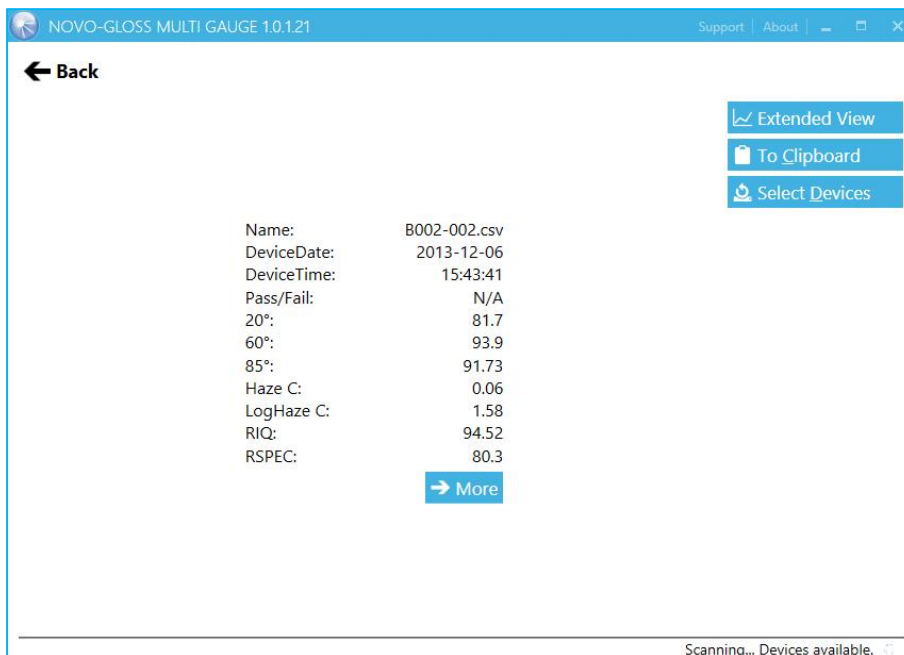
## Measurement pages

### Simple View

If you do not want to make extensive measurements but want to work as easy as possible with your device, the simple view will show you all necessary information without too much confusing information. Simple view is the default start setting.



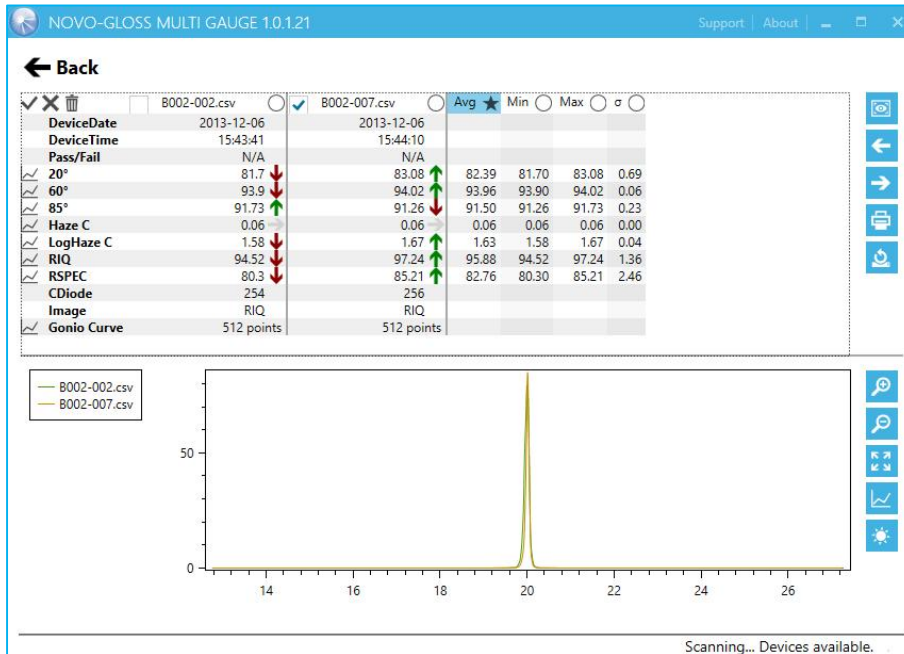
Once a measurement has been made, the data will appear one by one.



From here, you can easily copy the measurement to clipboard by using the “To clipboard” icon on the right, e.g. for export to 3<sup>rd</sup> party software (e.g. Excel®).



## Extended View

The measurement page “Extended view” is the more complete section to visualize your measurement data.






It is divided into data view section (upper part) and graph view section (lower part).

### Right side menu buttons Extended View

-  • Simple View/Extended View – switch between a brief analysis (simple) or full scale (extended) view to visualize your measurement data
-  • Import - connect to your device or storage to upload data into the measurement page

#### Note for Data Import:

To import data from your device, the instrument must be connected via USB!  
Drag&Drop technique to copy data from the device to this screen is possible!

-  • Export – export your data to CSV, Excel®, HTML or other file formats
-  • Print –prints your extended view data content and graph
-  • Select devices - if you face a timeout or want to connect other devices, press “Select Devices” in order to enter pairing section again

## Data view section

Your measurement data is displayed here

✓ X	<input type="checkbox"/> M1	<input type="checkbox"/> M2	<input checked="" type="radio"/> Avg ★	<input type="radio"/> Min	<input type="radio"/> Max	<input type="radio"/> σ
	Device	RhpointIQ	RhpointIQ			
	DeviceDate	2014-09-13	2014-09-13			
	DeviceTime	12:24:52	12:39:53			
✓	20°	5.04 ↓	5.15 ↑	5.10	5.04	5.15 0.06
✓	60°	31.49 ↓	31.76 ↑	31.63	31.49	31.76 0.14
✓	85°	70.55 ↓	70.65 ↑	70.60	70.55	70.65 0.05
✓	Haze	9.77 ↓	9.93 ↑	9.85	9.77	9.93 0.08
✓	LogHaze	221.92 ↓	224.89 ↑	223.41	221.92	224.89 1.49
✓	DOI	1.44 ↓	1.57 ↑	1.51	1.44	1.57 0.07
✓	RSPEC	0.76 ↓	0.77 ↑	0.77	0.76	0.77 0.01
✓	RIQ	1.2 ↓	1.21 ↑	1.21	1.20	1.21 0.01
	CDiode	253	253			


Default name is “M” for measurement and a continuing number, e.g. “1”, renaming measurements is possible by clicking on the name field.

## Menu buttons in the data view section

Select/unselect measurements by either clicking on the checkboxes

Or selecting them all at once by using the check or cross sign ✓ X

And after selecting them, delete measurements by clicking on the bin symbol 

Activate/deactivate indices - turn on/off indices in the lower graph section that are of no interest by clicking on the symbol in front of the index 

## Choosing a standard for comparison

In order to set a standard for comparing your measurements against, select the circle next to the name of a measurement  - the circle will then change into a blue marked star  (default standard is the average of your measurements (“Avg”))

### Example:

Standard is average:

<input type="checkbox"/> M2	<input type="radio"/> Avg ★
RhpointIQ	
2014-09-13	
12:51:14	
4.56 ↑	4.53
30.01 ↓	30.02
71.65 ↑	71.33

Standard is measurement “M2”

<input type="checkbox"/> M2	<input checked="" type="radio"/> Avg
RhpointIQ	
2014-09-13	
12:51:14	
4.56	4.53
30.01	30.02
71.65	71.33

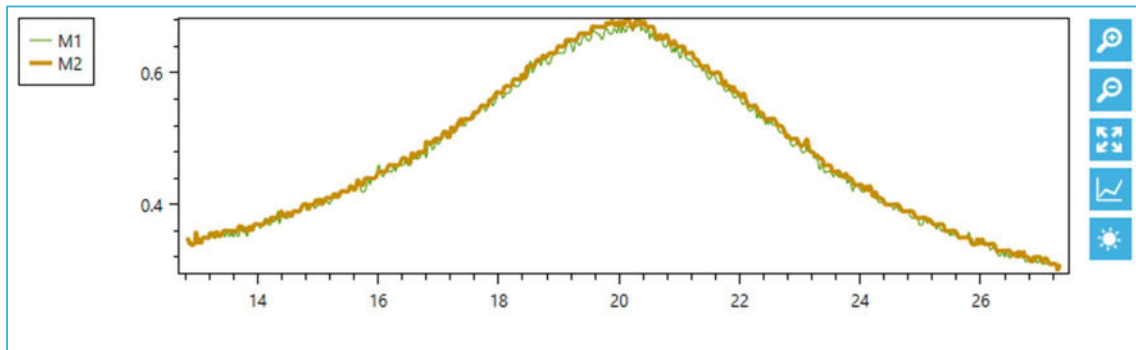
## Comparison indices

“Index is lower than standard” - a red downwards arrow 

“Index is higher than standard” – a green upwards arrow 



## Graph view section



### Graph view menu buttons



- Zoom in – increase resolution of your curve display



- Zoom out – decrease resolution of your curve display



- Reset zoom – reset zoom factor back to standard



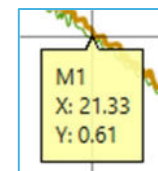
- Lines view – change curve display to lines style



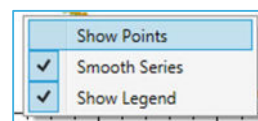
- Heatmap view – change curve display to heatmap style

### Graph view controls

- Click on a point in the curves to receive info about it, or



- Right click to reach the right-click menu



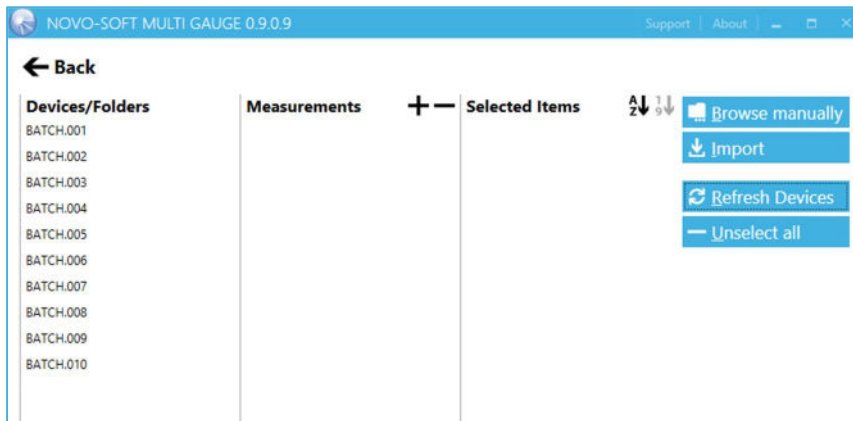
Apart from the right-click-menu, the following control features are available:

Command	Effect
Use mouse wheel inside graph view	Zoom in/out
Use mouse wheel on x-axis	Zoom only x-axis
Use mouse wheel on y-axis	Zoom only y-axis
+	Zoom in
-	Zoom out

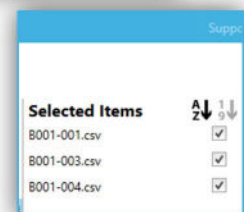
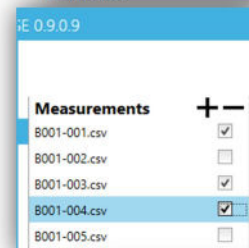
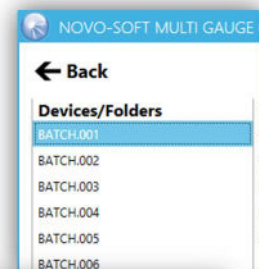
## Import data page

Note: to import data, the device must be connected via USB; if the device is connected via USB AFTER you entered this page, please select “Refresh Devices” from the right button section.

Apart from this dialogue, simply drag&drop your files to the extended view!



- Devices/Folders - these are the batch folders stored on your instrument – click on a batch folder to see its contents
- Measurements - this is the content of the selected batch folder from “Devices/Folders” – select the measurements you want to import by checking the checkboxes, or select/unselect all items by clicking on the plus or minus icons **+ -**
- Selected items – these are all items selected from the sections before, in selected order; if you want to sort your selection before you import, either press the “sort by name” or “sort by date” icons **A-Z** **Z-A**
- If you want to reset your selection, either uncheck the selected items or press “Unselect all” from the right button list



Alternatively, you can also browse and import files stored on your PC or Network; to do so, simply click on the “Browse manually” icon on the right.

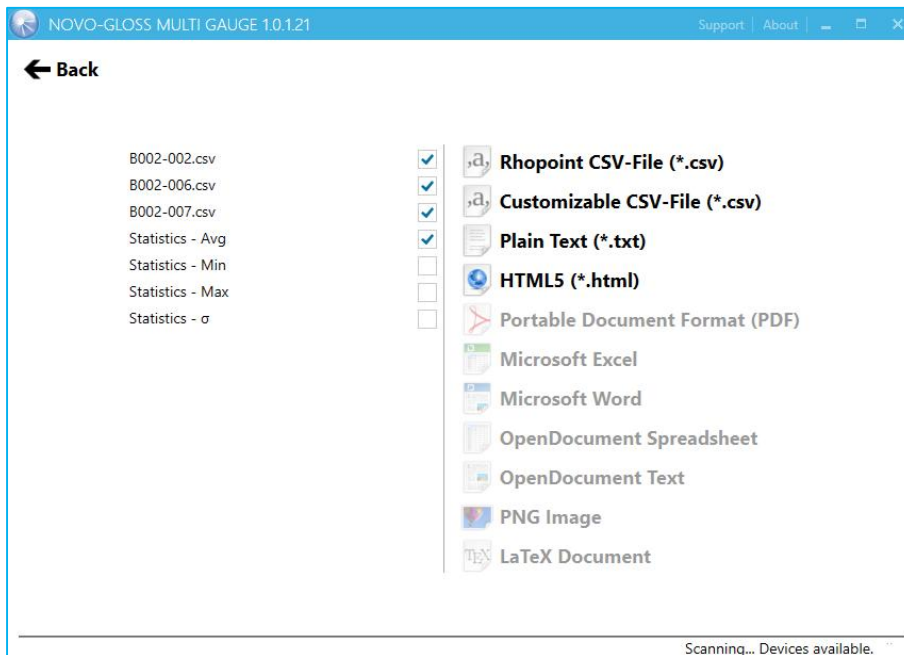


After you made your choice, select “Import” from the right



## Export data page

After your measurements are evaluated, you might want to export them to other file types to process them further (e.g. Excel®).



All measurements from the extended view are automatically selected for export.

Not select are the statistics, including average. If you need any of these inforamtions, please check them before export.

After you made your selection, choose any of the available filetypes.

With Version 1.0, registered file types are

- Rhopoint CSV-File – native CSV file for Rhopoint devices, also to store your measurements in safe location for future import
- Customizable CSV-File – a summary of your measurements in one file, with customizable CSV parameters
- Plain Text – a simple txt file for 3<sup>rd</sup> party applications using txt import rather than CSV
- HTML5 – latest HTML file version to support latest multimedia and WWW applications

After the export has been performed, a confirmation message appears.

